



**Fowler High School 50<sup>th</sup> Anniversary  
Homecoming Celebration  
October 9 & 10, 2009**

**Friday Evening - October 9, 2009**

**Homecoming Parade and Entertainment sponsored by the Fowler Band Boosters  
Fowler High School, Main Street Fowler, Spicer Field**

- 6:00-9:00 High School Open House and Memorabilia Displays
- 6:30-7:15 Homecoming Parade
- 7:15-8:15 Homecoming Entertainment and Marching Band Show
- 8:15 Traditional Homecoming Bonfire

**Saturday Morning and Afternoon - October 10, 2009**

**Homecoming Tailgate sponsored by Fowler Public Schools Education Foundation  
Fowler High School**

- 9:00-6:00 High School Open House and Memorabilia Displays
- 9:00-6:00 Craft Show (vendors contact Mike Spicer, 989-593-0211 or mspicer@fowerschools.net)
- 9:00 FHS 50<sup>th</sup> Anniversary/Jeff Wieber Memorial 5K Run/Walk
- 10:00 Kids Fun Run
- 10:00-2:00 Homecoming Tailgate Lunch Under the Big Top  
Beef Barbeque, Hot Dogs for Kids, Chips & Water
- 10:30 Kids games sponsored by Fowler PTA
- 11:00-2:00 Live Band—the JABS!
- 1:00 Alumni Band Rehearsal – Band Room

**Saturday Afternoon - October 10, 2009 - 2:00**

**Homecoming Game vs. longtime CMAC rival Portland St. Patricks  
Spicer Field**

**Saturday Evening - October 10, 2009**

**Post Game Fowler Athletics Celebration sponsored by the Fowler Athletic Boosters  
Fowler Conservation Park**

- 5:00-8:00 Dinner amid Fowler Athletics memorabilia and displays  
Ham, Potatoes, Vegetable, Salad, Roll and Dessert (Coffee or Punch included)
- 8:30-11:30 50th Anniversary Alumni Social (21 and over)  
Beverages, Munchies and Music through the Decades (1950s-current)

## **Piggott Gym Thank You's!!**

The beautiful renovation of Piggott Gym was made possible through hundreds of hours of volunteer labor as well as donations of equipment, tools, materials, and expertise. We are deeply grateful to the following individuals and business partners who helped on this project. Thanks to their generosity, we have successfully improved and rejuvenated our gym, extending its useful life as a quality facility for many years to come. We apologize to any volunteers who we inadvertently and inevitably missed in creating this list!!

### Business Partners:

Kurt Thelen of Schneider Builders for tools, labor, and project management assistance  
Jerry Wohlfert of W & A Masonary for tools, labor and project management assistance  
Jim Loynes of Complete Color for donating the use of the fork lift  
Titan Rentals of Lansing for donating the scissor lifts  
Gary Stow for painting the ceiling at a reduced rate  
Gary Schneider of Schneider Fabrication for making new backboard support components  
Palatka Electric of Elsie - contractors for the lighting installation as part of the sinking fund project  
Ken Barber of Barbers Floors & More in St. Johns – contractor for floor replacement and installation  
Dick Martin of Accent Hardwood Floors in Portland – contractor for floor refinishing  
Bruce DeLong of Michigan Graphics & Signs in St. Johns – contractor for floor design and painting  
Fowler maintenance staff: Mike Schmitt, Stan Simon, Trish Witgen, and Jerry Klein

### Community Volunteers:

Randy Antes  
Dan Bengal  
Chris Conner  
Mike Fedewa  
Daric Feldpausch  
Roy Feldpausch  
Patty Feldpausch  
Brian Goerge  
Frank Hufnagel  
Neil Hufnagel  
Paul Hungerford  
Duane Klein  
Rick McCune  
John Miller  
Lynn O'Rourke  
Tom O'Rourke  
Jack Pline

Dan Schmitt  
Patty Schmitt  
Dan Simon  
Jeff Thelen  
Paul VanElls

### Student Volunteers

Keegan Bengel  
Nick Hufnagel  
Lindsey Hufnagel  
Tony Hufnagel  
Corey Hungerford  
Jacob Schmitt  
Josh Schmitt  
Mary Schomish  
Cody Schueller  
Drew Simon  
Jarud Wohlfert



John Miller and Kurt Thelen demolish one of the storage closets while Daric Feldpausch supervises and Tony Hufnagel waits his turn.



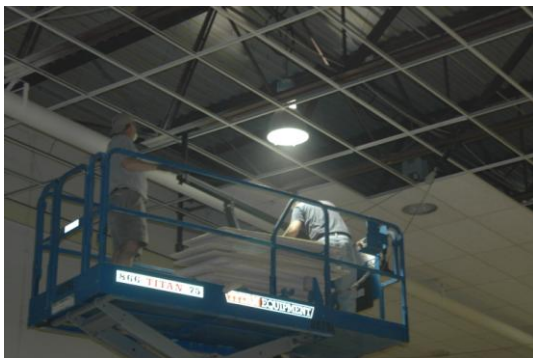
The renovated gym with drop ceiling and closets removed.



Mike Fedewa and Kurt Thelen remove the ceiling deck of one of the storage closets while Keegan Bengal unloads ceiling tiles.



The new center court graphic.



Volunteers remove the ceiling tiles from the old drop ceiling.

## **Athletic Transportation: A Parent/School Partnership**

Our athletic transportation serviced this year will be significantly different than in the past, and is dependent on a strong partnership between the school and parents. As discussed in the *Eagle Flyer* and several parent emails this spring and summer, the district has developed a budget for the 2009-2010 school year that included nearly \$100,000 in program reductions and revenue adjustments.

These reductions were necessary due to a reduced student count, and a freeze in state per pupil funding. The budget adjustments include a \$5,000 reduction in athletic transportation and an increased contribution from the athletic fund to the general fund of \$5,000 to offset remaining transportation costs and coaches salaries. The general fund will continue to support athletics with approximately \$105,000 in coaches' salaries and transportation expenses.

Where some districts are reducing athletic budget through eliminating teams, we are committed to preserving our current opportunities for participation. For that reason, we chose to look at ways to reduce athletic transportation costs. We also considered, and then rejected, eliminating transportation for certain teams or grade levels as it would require parents to provide transportation for some athletes at times when a parent would likely need to leave work to do so. Instead, we are implementing a program that works in partnership with parents by providing transportation at times and to locations that would prove most difficult for parents. We will then depend on parents to provide transportation at times and from locations when they are more likely to be able to do so. The district will provide transportation to all weekday events so that parents do not need to leave work to get students to contests. The district will also provide transportation to and from weekday events that are 25 miles or further away as these may be events that are more difficult for parents to attend. Parents will be required to provide or arrange for transportation home from weekday events within 25 miles. Parents will also be required to provide or arrange transportation both to and from Saturday athletic contests. A list of all contests for which parents will need to provide transportation will be provided at the beginning of each season.

We regret the need to reduce the level of transportation for our student-athletes. We hope that parents appreciate our commitment to maintaining athletic opportunities and will partner with us to help preserve them. We continue to pursue our goal of being the best by any standard, and depend upon a spirit of teamwork among our students, coaches, and parents to make that a reality. Thanks in advance to our parents for your assistance and cooperation.